

# Ocotillo Performing Arts Center

A Virtual Tour – Includes  
Architects' plans and photos from  
the last few walk throughs

# Colors to be used in the Ocotillo:



- A: Curtain
- B: Seats
- C: Wood backs of chairs
- D: Floor tiles
- E: Wall colors
- F: Exterior stucco
- G: Wood on the front of the stage

# The "Players"



Bill Dohn  
Acoustician

Adam Shalleck  
Theater Consultant

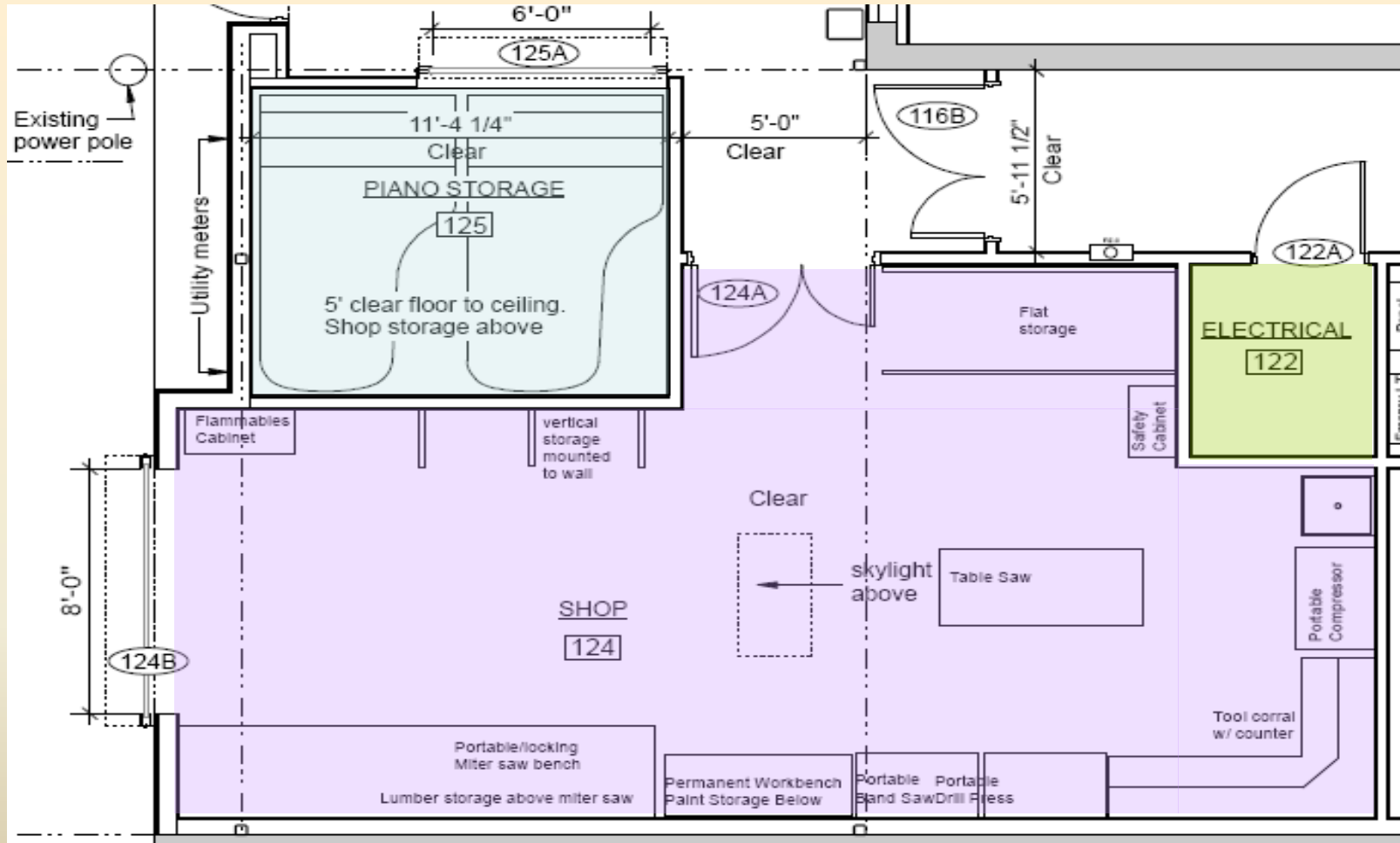
George Holmes AAC	Adam Blejwas Jaynes Construction	Devendra Contractor Architect	Bill Dohn
-------------------------	---	-------------------------------------	--------------

Melanie Shelor Architect	Adam Shalleck
--------------------------------	------------------



# What's What:

As you enter from the alley, the NW corner contains the Shop area, Piano Storage and Electrical Room





- Top Left:  
Entering the Shop Area

- Bottom Left:  
Framing for the Piano Storage

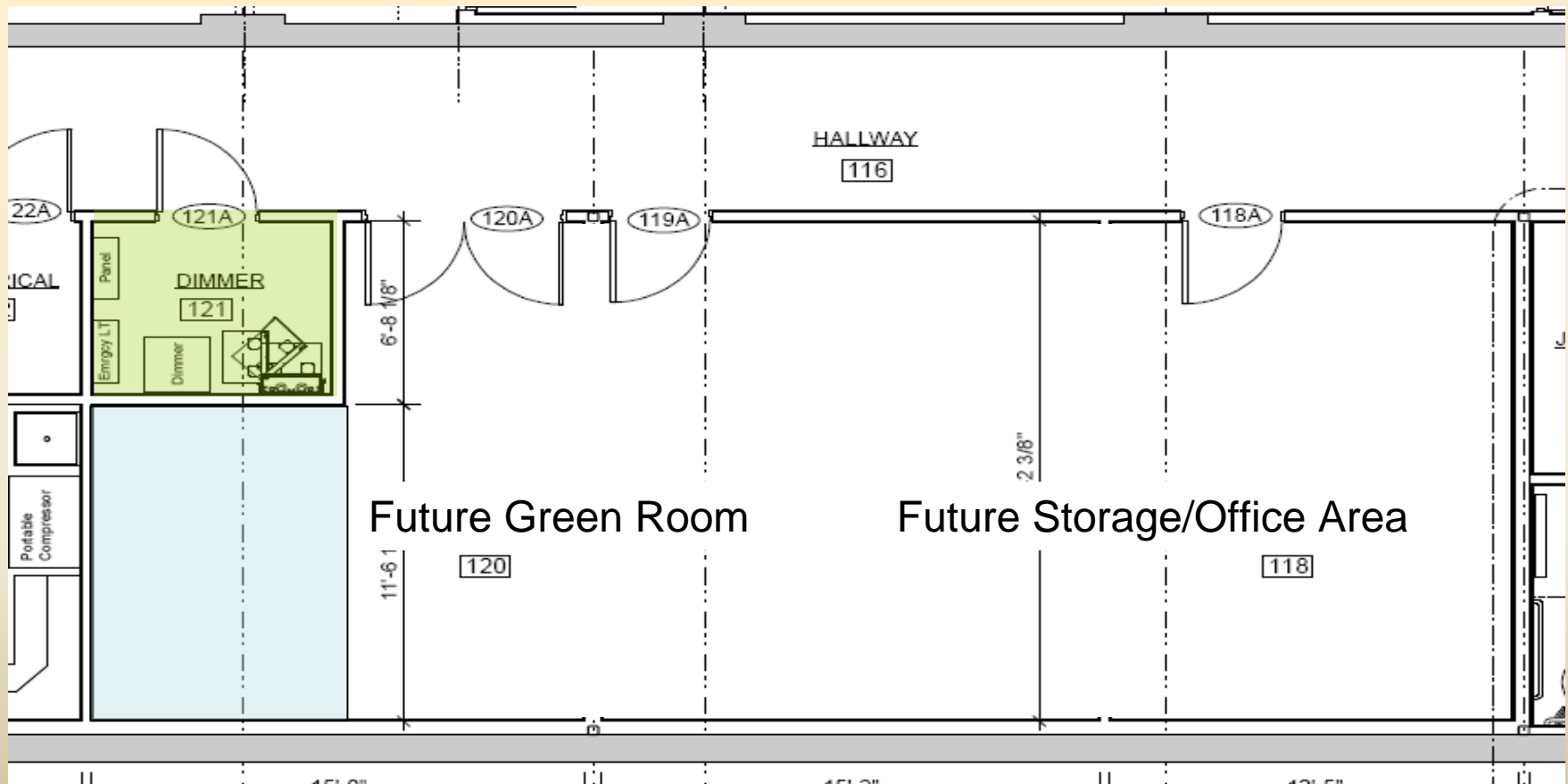


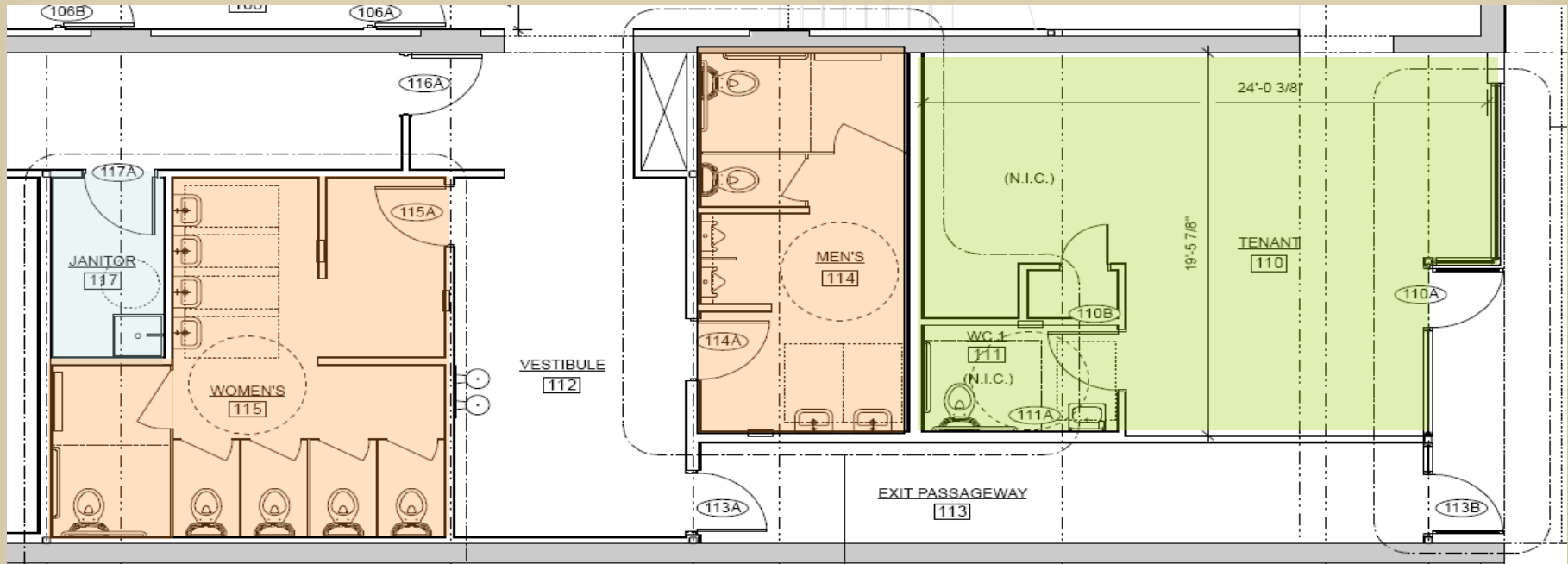
- Top Right: The  
drywall went up in  
the Shop Area

- Bottom Right:  
Take a right exiting  
the Shop and you  
find the Hall taking  
you toward the  
front of the building



Just past the Electrical Room you find the Dimmer Room and the portion of the building which will not be completed at this time. A small room just behind the Dimmer Room will later become a kitchenette area.





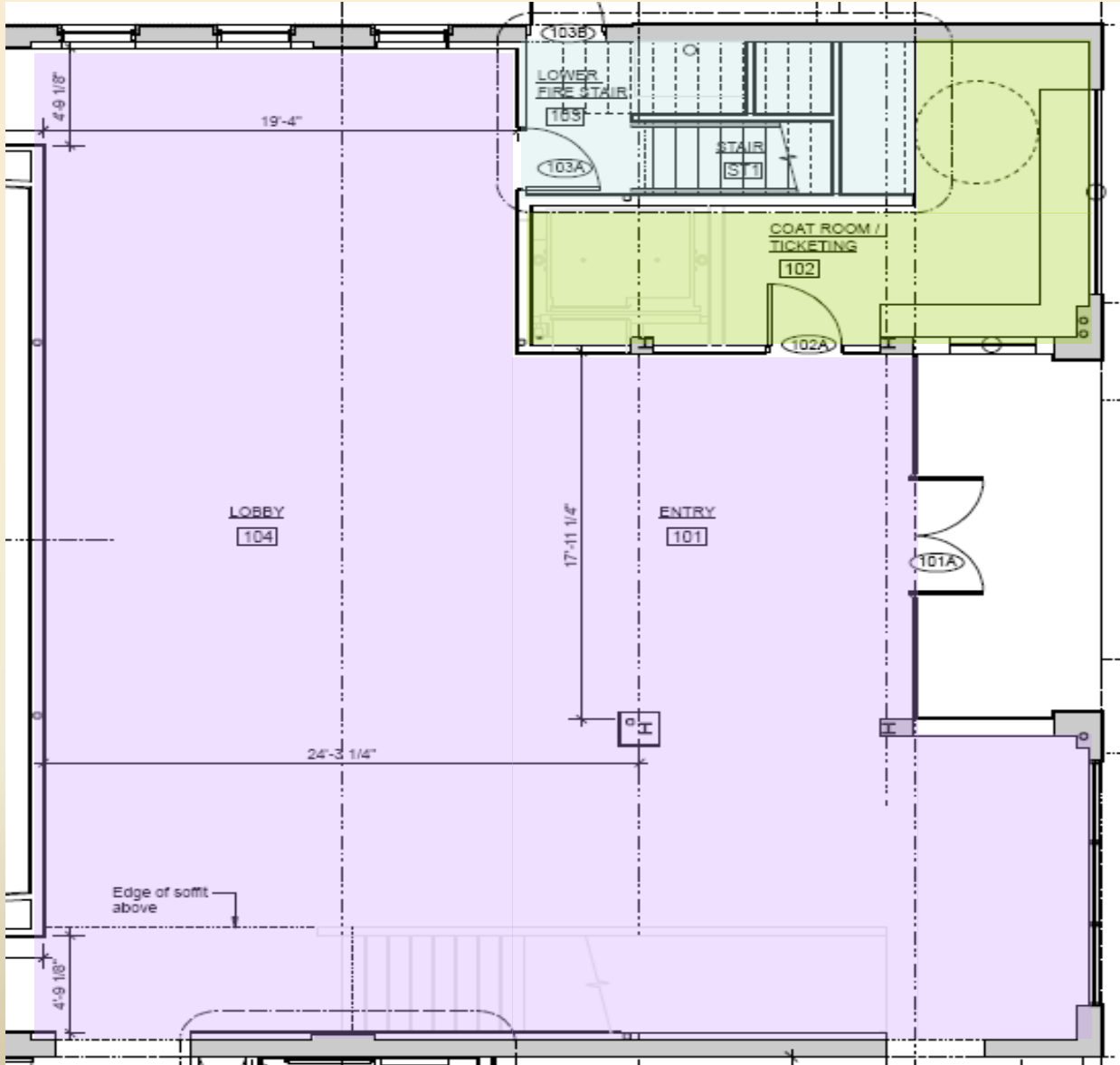
Traveling further South you find the Janitor's closet and the hallway opens into the Vestibule, just to the West of the Lobby area. The Vestibule is where you will find the Restrooms – and yes, they will be able to handle more than one patron at a time!!

Immediately to the South, in the front of the building, is the space for our tenant – at this time, the Coffee Filter is planning to return.



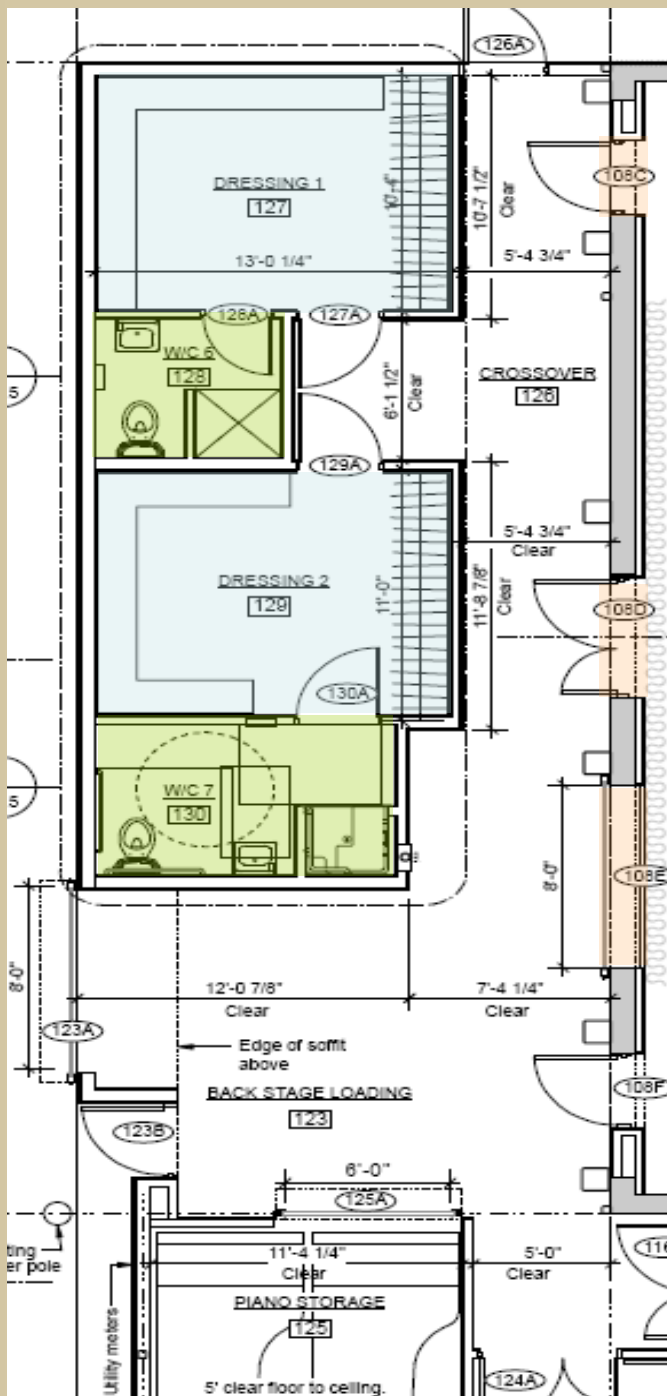
Believe it or not, these rooms will become the Janitor's Closet, the Women's Restroom and the Tenant's Space

## Speaking of the Lobby ...



Here it is!

When you enter from Main Street, the ticket window will be in the SE corner of the building – you will access the window before actually entering the doors. Immediately behind you will see the coat room (future elevator) and the stairwell that currently accesses the 2<sup>nd</sup> floor



Before you get a look at the Lobby and theater areas, let's show you the backstage area.

If you had gone straight East from the Shop instead of turning, you pass the Piano Storage (which will be climate controlled to protect the instruments) and enter the Backstage Loading Area. A little further East you will find the two Dressing Rooms, both with showers & toilets (one handicap accessible).

As you can see, to the South of the Loading and Dressing Room areas, we have stage entrances.

# The Dressing Areas



From framed in  
to dry walled!

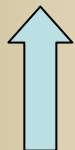




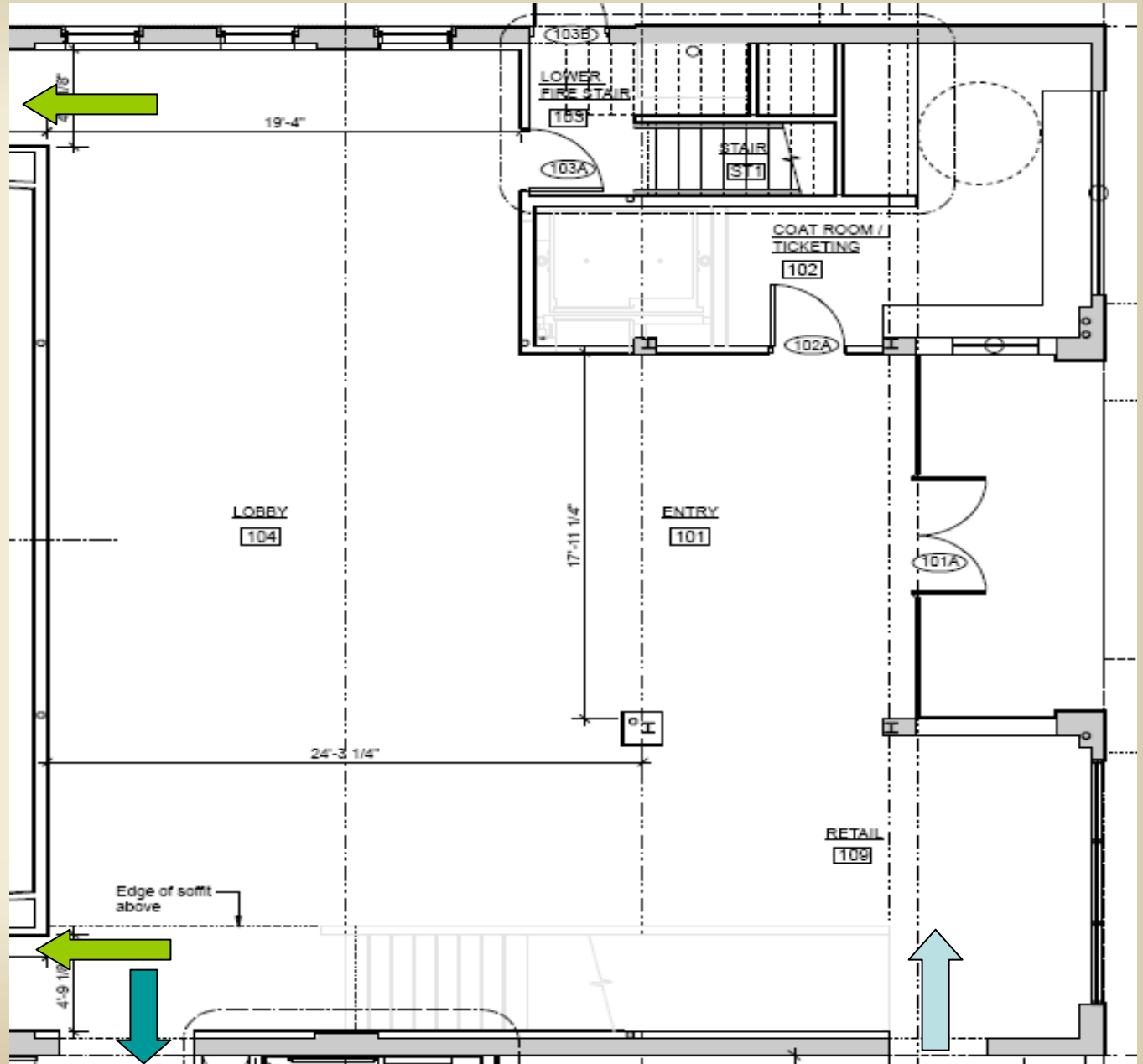
From the Lobby  
you can enter  
the theater from  
either side



This exit takes  
you to the  
Vestibule



And this is  
your entrance  
from our  
Tenant space



# Various Lobby Views



< Entering from the Tenant Space you'll see the Donor Wall

Turn left and you're in the Lobby >



< Turn right from the Donor Wall and you'll see the street entrance and ticketing area

View from the entrance >



# More varying angle views of the Lobby



It really is going to be bigger than we expected





# Views of the theatre area, from concrete finally poured to framing to drywall







And don't forget the second story ...  
At this time, it will serve primarily as technical space and storage, but it will still be wonderful!





Architects Renderings of the  
finished project





